

# Technical Specifications Studio Theatre

The Courtyard, Edgar Street, Hereford, HR4 9JR

Updated November 2019

BOX OFFICE **01432 340555**

[courtyard.org.uk](http://courtyard.org.uk)



## Contact Details

Carl Hulme  
Technical & Production Manager  
[carl.hulme@courtyard.org.uk](mailto:carl.hulme@courtyard.org.uk)

Richard Loveridge  
Technician (Sound)  
[richard.loveridge@courtyard.org.uk](mailto:richard.loveridge@courtyard.org.uk)

Conall Hulme  
Technician (Lighting)  
[conall.hulme@courtyard.org.uk](mailto:conall.hulme@courtyard.org.uk)

Nicholas Acons  
Technician (Stage)  
[nicholas.acons@courtyard.org.uk](mailto:nicholas.acons@courtyard.org.uk)

Dan Sumner  
Technician (Stage)  
[dan.sumner@courtyard.org.uk](mailto:dan.sumner@courtyard.org.uk)

Simon Nicholls  
Head of Film  
[simon.nicholls@courtyard.org.uk](mailto:simon.nicholls@courtyard.org.uk)

Lucy Hemmings  
Technical Admin Assistant  
[lucy.hemmings@courtyard.org.uk](mailto:lucy.hemmings@courtyard.org.uk)

[tech@courtyard.org.uk](mailto:tech@courtyard.org.uk)  
Direct Line: 01432 346 508

BOX OFFICE **01432 340555**

[courtyard.org.uk](http://courtyard.org.uk)



## Stage

The studio has raked seating for up to 120 people. The performance area, with the raked seating bank in place (without ground rows), is 9m wide x 3.3m deep. The front row of the seating bank can be retracted to provide a performance depth of 4m. The seating bank pushes right back to create a flat space of approximately 9m x 9m. There are chairs and tables available for flat floor configurations.

Seating arrangements are flexible; please contact the technical department to discuss approved layouts for seating and staging. Any deviation from the standard layout may involve calling in a casual crew of two people for a minimum of two four hour calls to alter the format, and then restore it. The cost of this work will be recharged to the contra account.

Grid height is approximately 4.3m.

The Courtyard will provide a clean, bare performance area. The Studio has a black concrete floor and royal blue walls and doors. There are full blacks across the back wall and a cinema screen, which can be raised.

**There are no wings, side masking or backstage cross over.**

Entrances from the dock and dressing room to the performance space are USR, or through the central dock doors. There is no SL entrance.

Access to the studio is via a small dock with doors leading out to the side of the building. The dock and performance space are flat to the outside of the building

## Dressing Room

The Studio has one dressing room adjacent to the dock to accommodate 8 people. The dressing room has mirrors, central hanging rail, toilet and shower.

The Green Room is available for all visiting companies in the main house and studio to use. Facilities include a fridge, microwave, kettle, washing machine and dryer with an iron and ironing board.



## Get In & Fit Up

The Courtyard will provide for the get in (excluding exceptional loads and heavy mechanical equipment) up to a maximum of 1 person and 8 single hours.

If the get in takes place on a Sunday or bank holiday, then each hour worked shall count as two single time hours.

The Courtyard reserves the right to determine the maximum number of staff and hours necessary for a safe and efficient get in.

The visiting company shall be charged for all persons in excess of 1 and for all hours in excess of 8 single time hours.

Normal get in hours are between 09:00 - 13:00 and 14:00 – 18:00.

All hours outside these times may be charged to the contra account unless otherwise agreed by the resident manager.

## Show Call

The Courtyard will provide and pay for resident performance staff consisting of 1 duty technician. This person is available 1 hour 30 minutes prior to curtain up until the advertised performance start time.

The visiting company shall be charged via the contra account for all additional hours and staff deemed necessary.

## Get Out

One technician shall be provided for **one single hour from curtain down**.

Larger performances who's get out exceeds 1 hour or have a specific lighting rig (requiring a derig) shall be charged at an hourly rate of 1.5 times per hour per person for a minimum of four hours (currently at £96.42 +VAT).

## Safety

All sets used at The Courtyard must be either class 1 or fireproofed with a recognised brand of flame retardant. The Courtyard reserves the right if necessary to refuse any item if we feel any Health and Safety regulations have been compromised.

All electrical equipment bought into the theatre must have a valid PAT sticker on it. Any equipment not compliant will be checked by a member of the courtyard at a rate of £4.00 per item, the cost of any subsequent repairs will be passed to the visiting company.

All risk assessments must be made available to the courtyard prior to or upon arrival so copies can be made and kept by ourselves.

## Lighting

### Dimmers and Patches

Overhead fixed lighting grid with 35 patches distributed evenly around the perimeter and two cross bars of the grid.

4 x dips circuits USL

The hard patch panel is located in the studio control room.

4 x 6 way ADB Portable Dimmer Racks (23 ways + 1 way for H/L)

### Control

ETC Element 250ch w/ monitor, keyboard & mouse.

### Lanterns

ETC Source 4 Junior 25/50      4

ETC Source 4 Fresnel            8

Par64 Parcan                      8

Parcan fitted with CP62 lamp as standard.

Some CP61 may be available, please get in touch to discuss.

\*Additional lanterns from the Main House stock may be available subject to requirements in the Main House, however in no way can be guaranteed.

The Studio control room is situated at the rear of the raked seating bank. The control room has a large, window to the front, but no direct access to the performance space.

The studio control room is suitable for one or two operators only, as space is limited.

The studio does not have a Stage Management desk, show relay or comms system.

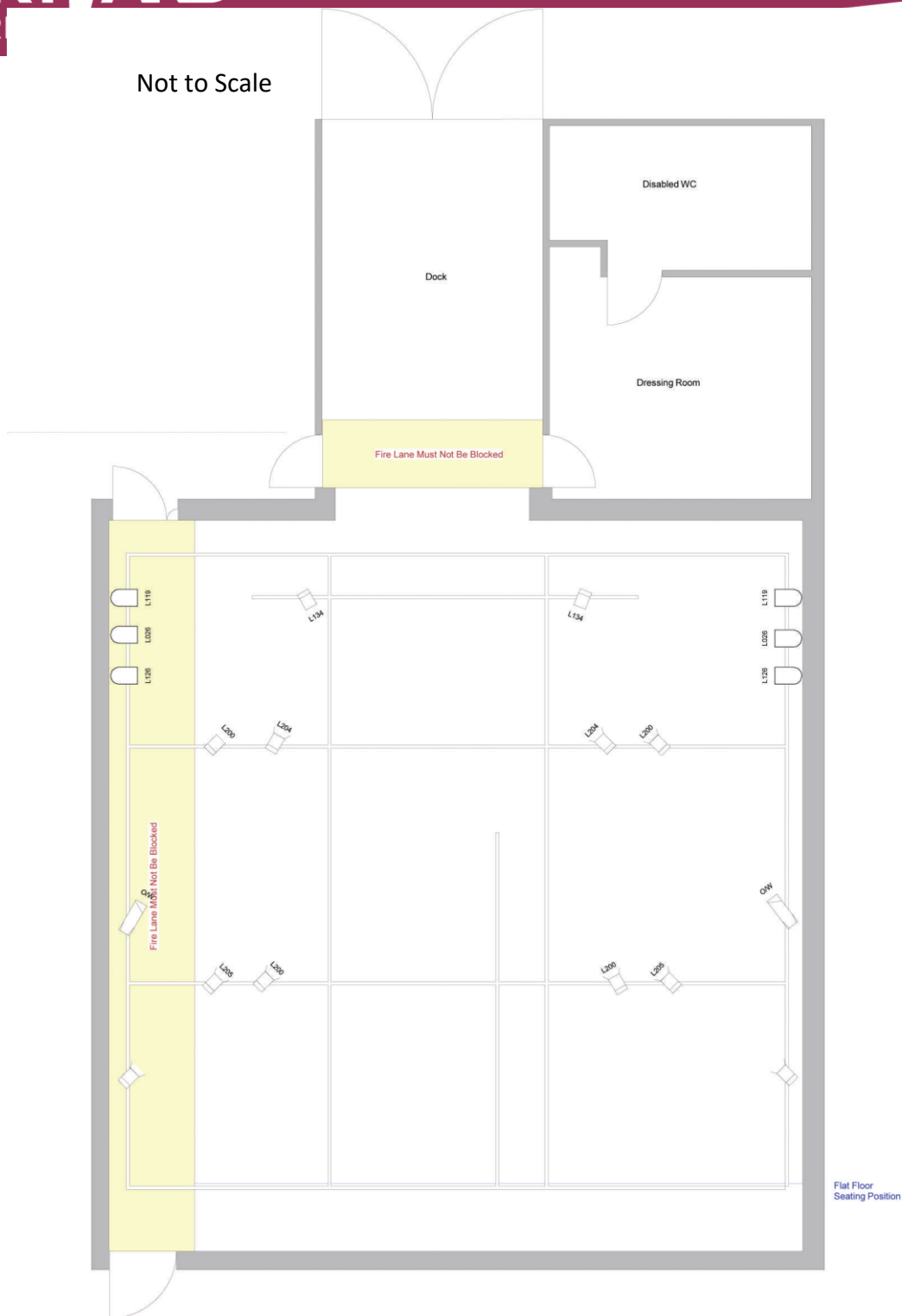


BOX OFFICE **01432 340555**

[courtyard.org.uk](http://courtyard.org.uk)



Not to Scale



BOX OFFICE **01432 340555**

[courtyard.org.uk](http://courtyard.org.uk)



## Sound

### Control

Behringer 8ch Mixing Console 1

### Playback

Numark CD Player 1

Mini Jack Connection for MP3 / Laptop 1

### FOH System

Yamaha CBR12 350/700w flown left and right on stage line.  
Speakers powered by Crest VS 900 Power Amplifier

\*Additional sound equipment may be available from the Main House stock subject to Main House requirements.

There are a limited number of microphones, Di's, stands and cables please get in touch to discuss arrangements.

*The above information applies to shows contracted with The Courtyard and Production Company.*

*Please be aware that additional staffing and equipment charges may apply to hirers of the venue, please get in touch to discuss.*

## Vehicle Parking

Parking available on site however a parking pass MUST be obtained from either the Duty Technician or the Box Office.

Failure to display a valid parking pass may result in a fixed penalty notice for which The Courtyard accepts no responsibility.

BOX OFFICE **01432 340555**

[courtyard.org.uk](http://courtyard.org.uk)

